

estate agents **auctioneers**



Flat 512, Horizon Broad Weir, City Centre, Bristol, BS1 3DJ
£235,000

Hollis Morgan - A bright and spacious one bedroom apartment located on the second floor of this well known purpose built development overlooking Castle Park and Cabot Circus. Communal gardens and chain free.

- Modern Purpose Built Development
- Close Proximity to Cabot Circus
- One Bedroom
- 2nd Floor
- Private Balcony
- Communal Gardens
- Gas Central Heating
- No Onward Chain

The Property

A rare opportunity to purchase an apartment in the popular Horizon development which overlooks Bristol's Cabot Circus shopping development.

The property comprises a dual aspect bright and airy open plan living / kitchen with access to a private balcony overlooking the developments well maintained communal gardens. The kitchen offers a range of wall and base units, laminated work surfaces as well as integrated appliances such as gas hob with extractor over, oven, fridge / freezer and dishwasher.

A large double bedroom, also overlooking the central gardens, also benefits from a built in wardrobe.

Completing the accommodation, there is a modern bathroom with mains fed shower over bath, basin, WC, shaver point and heated towel rail.

Location

Horizon is a new purpose built development overlooking Castle Park as well as Bristol's newest shopping centre, Cabot Circus, complete with its bespoke range of designer shops and fantastic choice of eateries.

The Centre is the heart of the City with constant action on offer from the Hippodrome and Colston Hall, Bristol Shopping Quarter at Cabot's Circus to the characterful Christmas Steps, Corn Street and St Nicholas Market. Nearby Millennium Square acts as a gateway to the neighbouring harbourside with its fountains and big screen as well as world class attractions such as Brunel's SS Great Britain, We The Curious, Bristol Aquarium, the Arnolfini, Spike Island, the Watershed and the M Shed.

Other Information

Leasehold. Residue of 150 years
Ground Rent: £275pa
Management Fee: circa £182.69 pcm

Council Tax Band: C

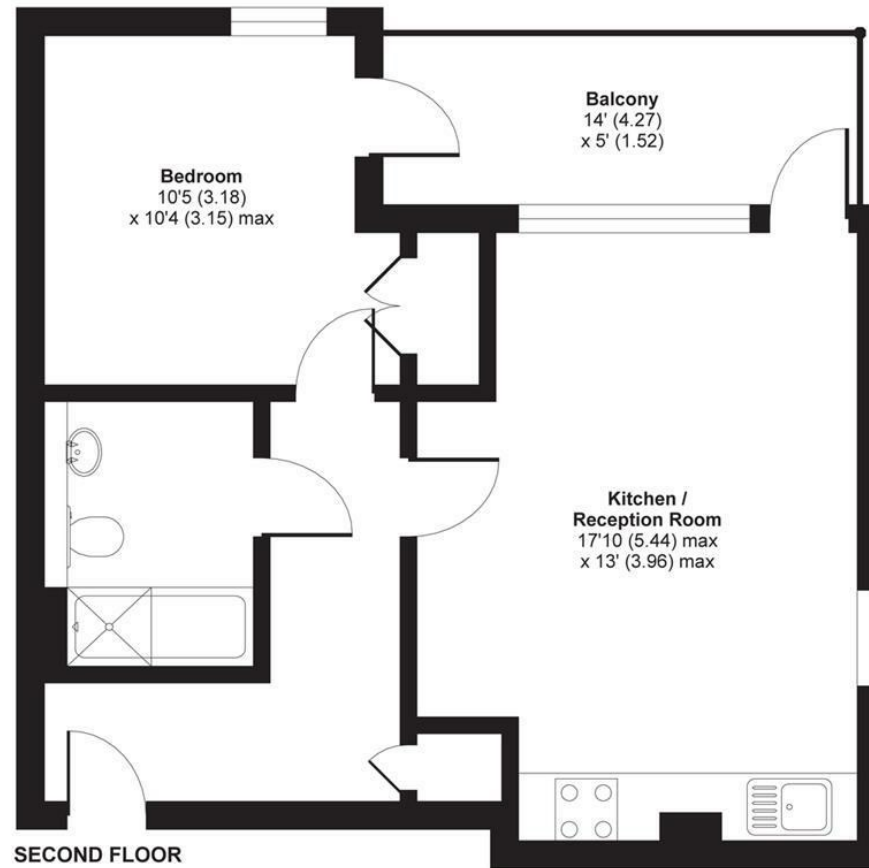
Please Note

We endeavour to make our sales details accurate and reliable but they should not be relied on as statements or representations of fact and they do not constitute any part of an offer or contract. The seller does not make any representation or give any warranty in relation to the property and we have no authority to do so on behalf of the seller.



Horizon, Broad Weir, Bristol, BS1

APPROX. GROSS INTERNAL FLOOR AREA 469 SQ FT 43.5 SQ METRES



SECOND FLOOR

Whilst every attempt has been made to ensure the accuracy of the floor plan contained here, measurements of doors, windows and rooms are approximate and no responsibility is taken for any error, omission or misstatement. These plans are for representation purposes only as defined by RICS Code of Measuring Practice and should be used as such by any prospective purchaser. Specifically no guarantee is given on the total square footage of the property if quoted on this plan. Any figure given is for initial guidance only and should not be relied on as a basis of valuation.

Copyright nichecom.co.uk 2020 Produced for Hollis Morgan REF : 586598

TEL | 0117 933 9522 | 9 Waterloo Street, Clifton, Bristol BS8 4BT

www.hollismorgan.co.uk | post@hollismorgan.co.uk

Hollis Morgan Property Limited, registered in England, registered no 7275716
Registered address, 5 Upper Belgrave Road, Clifton, Bristol BS8 2XQ

Energy Efficiency Rating		Current	Potential	Environmental Impact (CO ₂) Rating		Current	Potential
Very energy efficient - lower running costs				Very environmentally friendly - lower CO ₂ emissions			
(92 plus) A				(92 plus) A			
(81-91) B				(81-91) B			
(69-80) C				(69-80) C			
(55-68) D				(55-68) D			
(39-54) E				(39-54) E			
(21-38) F				(21-38) F			
(1-20) G				(1-20) G			
Not energy efficient - higher running costs				Not environmentally friendly - higher CO ₂ emissions			
		81	81			87	87
England & Wales		EU Directive 2002/91/EC		England & Wales		EU Directive 2002/91/EC	

hollis
morgan